

WINTER 2024

# FINNTRAIL





4	SNOWMOBILE RIDING GEAR
28	SNOWMOBILE BOOTS
30	THERMAL LAYERS
44	ACCESSORIES
54	LIFESTYLE



## SNOWMOBILE RIDING GEAR

We provide a wide range of snowmobile gear for every specific activity from trail riding to backcountry sledding. Each garment is developed with comfort and flexibility in mind to help the most serious powder riders push harder with less fatigue. Waterproof, breathable and super stylish, these suits and monosuits will be your ultimate head-to-toe protection in all the winter weather conditions you come across.

# DURABLE 2.5-LAYER FABRIC WITH A HARD-TEX® MEMBRANE

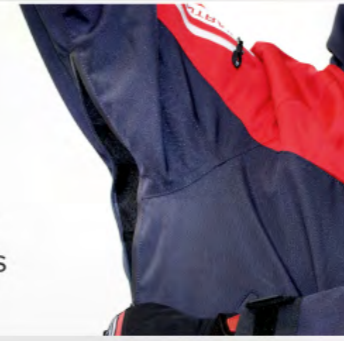
Taking on the roughest trails in the cold season is always a blast. Your ability to navigate through winter hazards depends on your gear. Regular waterproof clothing may not be enough.

That's where FINNTRAIL riding gear comes in. Our durable membrane materials and sport-specific technologies ensure you stay warm, dry, and safe, with no limits to your style.



## WATER-RESISTANT ZIP VENTS

Come with snowproof mesh in strategic areas



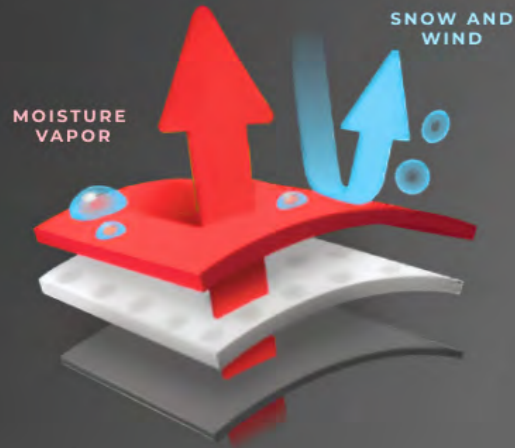
## REPELLENT COATING

Stops water from penetrating the fabric surface



## MOISTURE-PROOF FRONT ZIPPER

Withstands long exposure to sleet and snow



## 2,5 - LAYER FABRIC

- + Durable water-repellent coating
- Outer layer
- HARD-TEX® membrane
- Inner coating

## HOW IT WORKS

### BOOT RETENTION LOOP

Keeps pant hem in place



### SNOWPROOF BOOT GAITER

Prevents snow and debris from entering the boot



### REINFORCED FABRIC

Ensures high resistance to abrasions, tears, and scuffs



### ARTICULATED KNEE

Allows for natural unrestricted movement



### BUILT-IN SOFT KNEE PAD

3mm soft foam knee pads for comfort



# SNOWMOBILE MONOSUIT



**THERMALRATE**

**HARD-TEX**  
MEMBRANE



**YKK**

**3M**



## WIDETRACK 3852

### INSULATED MONOSUIT

The insulated WIDETRACK monosuit is designed for outdoor activities at temperatures as low as -30°C (-22°F). Featuring both comfort and reliability, this suit is perfect for long-distance travel in extremely cold weather.



Insulated suit



For utility and touring snowmobiles



For ATV riding in winter



For everyday wear in extreme winter conditions



For outdoor activities

- Durable 2.5-layer fabric with a HARD-TEX® membrane
- Reinforcement with extra-sturdy CORDURA® material
- DWR (Durable Water Repellent) finish
- THERMALRATE® insulation: body - 200 g/m<sup>2</sup>, sleeves and hood - 150 g/m<sup>2</sup>
- Front moisture-proof two-way YKK® zipper
- Fully-taped seams
- 3D articulated knees, ergonomic design of pants and sleeves
- Adjustable hood and collar
- Armpit zip vents with snowproof mesh
- Adjustable suspenders
- Mesh and hygroscopic microfleece lining
- Soft foam knee pads
- Adjustable cuffs
- Lycra wrist gaiters with thumb holes
- Built-in snowproof boot gaiters
- 5 external pockets with moisture-proof zippers: 2 thigh, 2 fleece lined side pockets and 1 sleeve pocket
- 2 inner pockets: 1 mesh pocket and 1 pocket with headphone ports
- Walkie talkie chest fastener
- Belt loops with D-rings to attach kill switch lanyard
- Suit-to-boot fastening system
- 3M reflective elements
- DWR (Durable Water Repellent) finish
- Soft foam knee pads

**WATERPROOF** 12 000 mm  
**BREATHABLE FABRIC** 8000g/m<sup>2</sup>/24h



**COLOR** Graphite, CamoArmy, Red  
**SIZE** XS-XXXL, MK, LK, ML  
Expanded size chart King and Long

# SNOWMOBILE MONOSUIT



THERMALRATE

HARD-TEX  
MEMBRANE



3M  
YKK



## WIDETRACK PRO 3855

### INSULATED MONOSUIT

The insulated WIDETRACK PRO monosuit is designed for long-distance outdoor activities at temperatures as low as -30°C (-22°F). The monosuit has thick insulation for the most freezing conditions and mesh lined armpit and crotch vent zips to cool down quickly when active. Comes with a drop seat feature for easy access without any hassle.



Insulated suit



For utility and touring snowmobiles



For ATV riding in winter



For everyday wear in extreme winter conditions



For outdoor activities

- Durable 2.5-layer fabric with a HARD-TEX® membrane
- Reinforcement with extra-sturdy CORDURA® material
- DWR (Durable Water Repellent) finish
- THERMALRATE® insulation: body - 200 g/m<sup>2</sup>, sleeves and hood - 150 g/m<sup>2</sup>
- Front moisture-proof two-way YKK® zipper
- Fully-taped seams
- 3D articulated knees, ergonomic design of pants and sleeves
- Adjustable hood and collar
- Armpit and crotch zip vents with snowproof mesh
- Quick-zip drop seat feature
- Adjustable suspenders
- Mesh and hygroscopic microfleece lining
- 3mm soft foam knee pads
- Adjustable cuffs and Lycra wrist gaiters with thumb holes
- Built-in snowproof boot gaiters
- 5 external pockets with moisture-proof zippers: 2 thigh, 2 fleece lined side pockets and 1 sleeve pocket
- 2 inner pockets: 1 mesh pocket and 1 zip pocket
- Walkie talkie chest fastener
- Belt loops with D-rings to attach kill switch lanyard
- Suit-to-boot fastening system
- 3M reflective elements

**WATERPROOF** 12 000 mm  
**BREATHABLE FABRIC** 8000g/m<sup>2</sup>/24h

**COLOR** Graphite  
**SIZE** S-XXXL, SK, MK, LK, XLK  
Expanded size chart King

# SNOWMOBILE SUIT



THERMALRATE

HARD-TEX  
MEMBRANE



3M  
YKK



## POWERMAN 3752

### INSULATED SUIT

The Insulated POWERMAN suit is built for outdoor activities at temperatures as low as -30°C (-22°F). Its outstanding design is perfectly suited for long days riding utility or touring snowmobiles in extreme conditions. With a blend of high-performance features and advanced materials, this suit excels on any outdoor adventure.



Two-piece suit



Insulated suit



For utility and touring snowmobiles



For outdoor activities

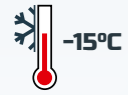
- Durable 2.5-layer fabric with a HARD-TEX® membrane
- Reinforcement with extra-sturdy CORDURA® material
- DWR (Durable Water Repellent) finish
- THERMALRATE® insulation:
  - jacket: body - 200 g/m<sup>2</sup>, sleeves and hood - 150 g/m<sup>2</sup>
  - bib: body - 150 g/m<sup>2</sup>, chest - 60 g/m<sup>2</sup>
- Front moisture-proof two-way YKK® zipper in a jacket
- Front zipper with protective flap in a bib
- Fully-taped seams
- 3D articulated knees
- Adjustable hood and collar
- Armpit zip vents with snowproof mesh
- Adjustable suspenders
- Microfleece lining
- Soft foam knee pads
- Adjustable cuffs
- Lycra wrist gaiters with thumb holes
- Built-in snowproof boot gaiters
- 4 external pockets in a jacket: 2 chest pockets with moisture-proof zipper, 2 fleece lined side pockets
- 2 inner pockets in a jacket: 1 mesh pocket and 1 pocket with headphone ports
- Pockets in a bib: 2 fleece lined thigh pockets with moisture-proof zipper and 1 chest pocket with moisture-proof zipper
- Walkie talkie chest fastener
- Belt loops with D-rings to attach kill switch lanyard
- Suit-to-boot fastening system
- 3M reflective elements
- DWR (Durable Water Repellent) finish
- Soft foam knee pads

**WATERPROOF** 12 000 mm  
**BREATHABLE FABRIC** 8000g/m<sup>2</sup>/24h



**COLOR** CamoArmy, Red  
**SIZE** XS-XXXL, MK, LK  
Expanded size chart King

# SNOWMOBILE SUIT



THERMALRATE

HARD-TEX  
MEMBRANE



3M



## ATLAS 3440

### INSULATED SUIT

The ATLAS suit offers complete coverage and protection against rain, sleet, snow, and wind at temperatures as low as -15°C (5°F). All features from the durable weatherproof fabric to the advanced powder skirt that keeps snow and wind off the body improve the function and comfort.



Two-piece suit



Insulated suit



For utility and touring snowmobiles



For outdoor activities



For ATV riding in winter

- Durable 2.5-layer RIPSTOP fabric with a HARD-TEX® membrane
- Reinforcement with extra-sturdy CORDURA® material
- DWR (Durable Water Repellent) finish
- THERMALRATE® insulation
- Mesh and hygroscopic microfleece lining

#### Jacket:

- Two-way adjustable hood
- Four large external pockets and a sleeve pass pocket
- Two inner pockets for gadgets and headwear
- Adjustable cuffs
- Elastic inner cuffs preventing water ingress
- D-ring to attach kill switch lanyard
- 3M reflective elements
- Powder skirt

#### Bib:

- Three large external pockets
- Adjustable suspenders
- 3M reflective elements
- 3D articulated knees and ergonomic design of pants
- Built-in snowproof boot gaiters

**WATERPROOF** 12 000 mm  
**BREATHABLE FABRIC** 7000g/m<sup>2</sup>/24h



**SIZE** S - XXXL, MK  
Expanded size chart King  
**COLOR** Blue



# SNOWMOBILE MONOSUIT

HARD-TEX<sup>®</sup>  
MEMBRANE



3M  
YKK



## BACKCOUNTRY 3901

### NON-INSULATED MONOSUIT

The lightweight and non-insulated BACKCOUNTRY monosuit is designed for professional riders with a focus on their mobility and aggressive riding. Bold design and high performance of smart fabrics provides maximum functionality.



Lightweight suit



For active mountain snowmobiling



For extreme riding



Maximum functionality

- Durable 2.5-layer fabric with a HARD-TEX<sup>®</sup> membrane
- Reinforcement with extra-sturdy CORDURA<sup>®</sup> material
- DWR (Durable Water Repellent) finish
- Designed to wear extra protective gear underneath
- Front moisture-proof two-way YKK<sup>®</sup> zipper
- Fully-taped seams
- 3D articulated knees, ergonomic design of pants and sleeves
- Adjustable hood and collar
- Armpit, neck, and groin zip vents with snowproof mesh
- Adjustable suspenders
- Mesh and hygroscopic microfleece lining
- Adjustable cuffs
- Lycra wrist gaiters with thumb holes
- Built-in snowproof boot gaiters
- 3 external pockets with moisture-proof zippers: 1 thigh, 1 side and 1 pass pocket on the sleeve
- 2 inner pockets: 1 mesh pocket and 1 pocket with headphone ports
- Walkie talkie chest fastener
- Belt loops with D-rings to attach kill switch lanyard
- Suit-to-boot fastening system
- 3M reflective elements
- DWR (Durable Water Repellent) finish

**WATERPROOF** 12 000 mm

**BREATHABLE FABRIC** 8000g/m<sup>2</sup>/24h



**COLOR** Graphite, DarkGreyLime

**SIZE** XS-XXL / MK, ML, LK

Expanded size chart King and Long

# FLOATING MONOSUIT



**THERMALRATE**

**HARD-TEX**  
MEMBRANE



**3M**  
**YKK**

**F**  
FLOATING  
**L**  
INSULATED  
**L**  
LIFESAVING  
**L**  
LAYER



## FLOAT 3902

### FLOATING MONOSUIT

The FLOAT monosuit is built with unique F.I.L.L. technology that offers additional flotation assistance. It ensures additional safety while riding a snowmobile across thin ice or winter fishing. If worn with proper thermal layers, this monosuit lets you extend your winter riding experience at temperatures as low as -30°C (-22°F).



Insulated suit



F.I.L.L. technology for additional flotation assistance



For utility and touring snowmobiles

- Durable 2.5-layer fabric with a HARD-TEX® membrane
- Unique F.I.L.L. technology for additional flotation assistance: body - 3 layers, sleeves - 1 layer
- Reinforcement with extra-sturdy CORDURA® material
- DWR (Durable Water Repellent) finish
- THERMALRATE® insulation: body, sleeves and hood - 80 g/m<sup>2</sup>
- Front moisture-proof two-way YKK® zipper
- Fully-taped seams
- 3D articulated knees, ergonomic design of pants and sleeves
- Adjustable hood and collar
- Armpit zip vents with snowproof mesh
- Adjustable suspenders
- Mesh and hygroscopic microfleece lining
- Adjustable cuffs
- Lycra wrist gaiters with thumb holes
- Built-in snowproof boot gaiters
- 5 external pockets with moisture-proof zippers: 2 thigh, 2 fleece lined side pockets and 1 sleeve pocket
- 2 inner pockets: 1 mesh pocket and 1 pocket with headphone ports
- Walkie talkie chest fastener
- Belt loops with D-rings to attach kill switch lanyard
- Suit-to-boot fastening system
- 3M reflective elements
- DWR (Durable Water Repellent) finish

**WATERPROOF** 12 000 mm  
**BREATHABLE FABRIC** 8000g/m<sup>2</sup>/24h



**COLOR** Red, Blue  
**SIZE** XS-XXXL / MK, ML, LK  
Expanded size chart King and Long

# FLOATING SUIT



THERMALRATE

HARD-TEX  
MEMBRANE



3M  
YKK

F  
FLOATING  
INSULATED  
L  
LIFESAVING  
L  
LAYER



## ESCAPE 3756

### INSULATED SUIT

The Insulated ESCAPE suit is built with unique F.I.L.L. technology that offers additional flotation assistance if a rider breaks through the ice and falls into the water. With two webbing grab straps in a jacket, this uncompromisingly protective suit improves your safety and lets you enjoy extreme outdoor activities at temperatures as low as -25°C (-13°F).



Two-piece suit



For outdoor activities



For utility and touring snowmobiles



F.I.L.L. technology for additional flotation assistance

- Durable 2.5-layer fabric with a HARD-TEX® membrane
- Unique F.I.L.L. technology for additional flotation assistance: jacket body - 1 layer, bib - 1 layer
- Webbing grab straps in a jacket to pull a person out of water
- Reinforcement with extra-sturdy Cordura® material
- DWR (Durable Water Repellent) finish
- THERMALRATE® insulation:
  - jacket: body - 200 g/m<sup>2</sup>, sleeves and hood - 150 g/m<sup>2</sup>
  - bib: body - 150 g/m<sup>2</sup>, chest - 60 g/m<sup>2</sup>
- Front moisture-proof two-way YKK® zipper in a jacket
- Front zipper with protective flap in a bib
- Fully-taped seams
- 3D articulated knees
- Adjustable hood and collar
- Armpit zip vents with snowproof mesh
- Adjustable suspenders
- Microfleece lining

- 3mm soft foam knee pads
- Adjustable cuffs and Lycra wrist gaiters with thumb holes
- Built-in snowproof boot gaiters
- 4 external pockets in a jacket: 2 chest pockets with moisture-proof zipper, 2 fleece lined side pockets
- 2 inner pockets in a jacket: 1 mesh pocket and 1 zip pocket
- Pockets in a bib: 2 fleece lined thigh pockets with moisture-proof zipper and 1 chest pocket with moisture-proof zipper
- Walkie talkie chest fastener
- Belt loops with D-rings to attach kill switch lanyard
- Suit-to-boot fastening system
- 3M reflective elements

**WATERPROOF** 12 000 mm  
**BREATHABLE FABRIC** 8000g/m<sup>2</sup>/24h

**COLOR** DarkGrey  
**SIZE** S-XXXL, MK, LK, XLK  
(Expanded size chart King)

# WOMEN'S SNOWMOBILE MONOSUIT



THERMALRATE

HARD-TEX  
MEMBRANE



3M  
YKK



## RACHEL 3851

### WOMEN'S MONOSUIT

Engineered with the ladies' comfort in mind, the insulated RACHEL monosuit is at home blasting the trails and deep powder at temperatures as low as -20°C (-4°F). With proper thermal layers underneath, it lets you adapt to a wide range of weather conditions. Tailored for the female figure and sizing, this monosuit features chic design and high-performance materials.



Insulated suit



For utility and touring snowmobiles



For active mountain snowmobiling



For ATV riding in winter



For outdoor activities

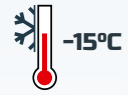
- Durable 2.5-layer fabric with a HARD-TEX® membrane
- Reinforcement with extra-sturdy CORDURA® material
- DWR (Durable Water Repellent) finish
- THERMALRATE® insulation: body - 120 g/m<sup>2</sup>, sleeves and hood - 80 g/m<sup>2</sup>
- Front moisture-proof two-way YKK® zipper
- Fully-taped seams
- 3D articulated knees, ergonomic design of pants and sleeves
- Adjustable hood and collar
- Armpit zip vents with snowproof mesh
- Adjustable suspenders
- Mesh and hygroscopic microfleece lining
- Adjustable cuffs
- Lycra wrist gaiters with thumb holes
- Built-in snowproof boot gaiters
- 5 external pockets with moisture-proof zippers: 2 thigh, 2 fleece lined side pockets and 1 sleeve pocket
- 2 inner pockets: 1 mesh pocket and 1 pocket with headphone ports
- Walkie talkie chest fastener
- Belt loops with D-rings to attach kill switch lanyard
- Suit-to-boot fastening system
- 3M reflective elements
- DWR (Durable Water Repellent) finish

**WATERPROOF** 10 000 mm  
**BREATHABLE FABRIC** 7000g/m<sup>2</sup>/24h



**COLOR** DarkgreyPink, BlueLime  
**SIZE** XS-L, SQ, MQ

# WOMEN'S SNOWMOBILE SUIT



THERMALRATE

HARD-TEX  
MEMBRANE



3M



## ATLAS W 3460

### WOMEN'S INSULATED SUIT

An insulated suit for ladies who live to ride. This is ultimate head-to-toe protection against rain, sleet, snow, and wind at temperatures as low as -15°C (5°F). Pants and jacket are tailored for a woman's figure to provide a sharp look and maintain comfort.



Two-piece suit



Insulated suit



For utility and touring snowmobiles



For outdoor activities



For ATV riding in winter

- Durable 2.5-layer RIPSTOP fabric with a HARD-TEX® membrane
- Reinforcement with extra-sturdy CORDURA® material
- DWR (Durable Water Repellent) finish
- THERMALRATE® insulation
- Two-way adjustable hood
- Seven large external pockets and two inner pockets for gadgets and headwear
- Adjustable suspenders
- Adjustable sleeve and pants cuffs
- Elastic inner cuffs preventing water ingress
- Mesh and hygroscopic microfleece lining
- D-ring to attach kill switch lanyard
- 3D articulated knees and ergonomic design of pants
- 3M reflective elements



**WATERPROOF** 12 000 mm  
**BREATHABLE FABRIC** 7000 g/m<sup>2</sup>/24h

**SIZE** XS - M  
**COLOR** Pink

# KIDS SNOWMOBILE MONOSUIT



THERMALRATE

HARD-TEX MEMBRANE



3M  
YKK



## SWIFT 3780

### INSULATED MONOSUIT FOR KIDS

The insulated SWIFT monosuit is a top-to-bottom insulated shell that lets your kids play or ride in snow, sleet, rain, and mud without getting wet or cold. Made of waterproof fabric with a comfortable microfleece lining and extra reinforced at the bottom of the pants, this monosuit keeps young riders cozy at temperatures as low as -20°C (-4°F).



For outdoor activities

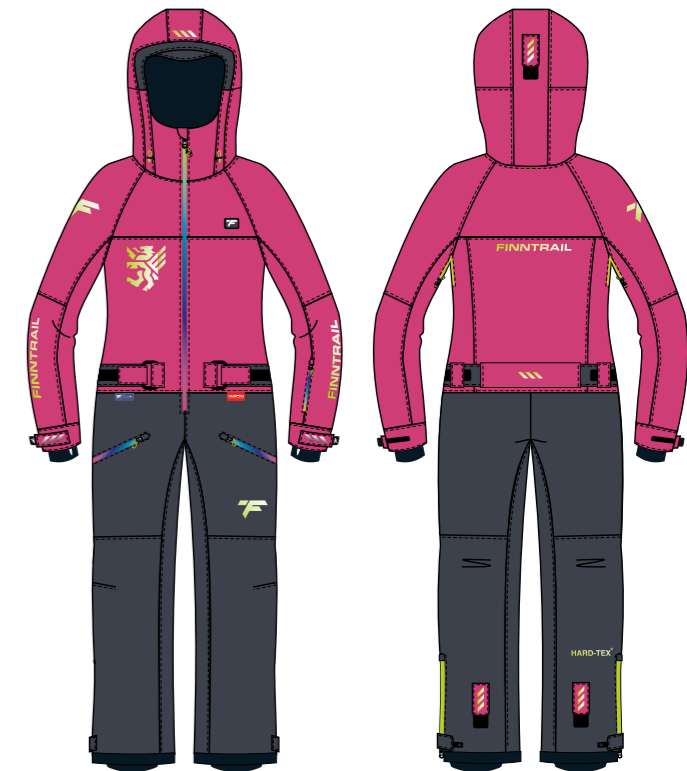


Insulated suit



For everyday wear in extreme winter conditions

- Durable 2.5-layer fabric with a HARD-TEX® membrane
- Reinforcement with extra-sturdy CORDURA® material
- DWR (Durable Water Repellent) finish
- THERMALRATE® insulation: body - 150 g/m<sup>2</sup>, sleeves and hood - 100 g/m<sup>2</sup>
- Front moisture-proof two-way YKK® zipper
- Adjustable belt with Velcro fastening
- Fully-taped seams
- Two-way adjustable hood
- Armpit zip vents with snowproof mesh
- Adjustable suspenders
- Mesh and hygroscopic microfleece lining
- Adjustable cuffs and Lycra wrist gaiters with thumb holes
- Built-in snowproof boot gaiters
- 3 external pockets with moisture-proof zippers: 2 thigh pockets and a sleeve pocket
- 2 inner pockets: a mesh pocket and a zip pocket
- 3M reflective elements



**WATERPROOF** 10 000 mm  
**BREATHABLE FABRIC** 7000g/m<sup>2</sup>/24h

**COLOR** Blue, Pink  
**SIZE** 134-140, 146-152

# SNOWMOBILE BOOTS



Complete your winter look with new Finntail BLIZZARD snowmobile boots. It's an excellent blend of our own outdoor experience and skills in powersports gear development in one smart package. Heavy-duty, lightweight and reliable. A perfect match to your snowmobile outerwear.

## BLIZZARD 5226

### SNOWMOBILE BOOTS

Specially designed for extreme outdoor enthusiasts to withstand temperatures as low as  $-75^{\circ}\text{C}$  ( $-103^{\circ}\text{F}$ ). These boots consist of two basic pieces: a heavy-duty outer shell and a removable inner liner. It is a high-performance blend of the best features of snowbike-specific footwear. The toe area is extra reinforced with durable rubber. The liner has minimal seams. The outsole is made of shock-absorbing material for extra cushioning and safety.

- Ergonomic construction
- Durable heavy-duty materials
- Rubber toe pads for shock absorption and comfort
- Lightweight EVA sole for better cushioning and insulation
- Reliable boot lacing
- Pull tab to help pull the boot on.
- Made of materials with a HARD-TEX® membrane
- 1200 gram insulated liner with HighLoft inner lining



**COLOR** GraphiteYellow, Graphite, GraphitePink

**SIZE** GraphiteYellow/Graphite: 5-13  
GraphitePink: 5-7

# THERMAL LAYERS

## THERMAL CLOTHING FOR ALL SEASONS

A layering system is a combination of layers from thermal underwear to shells that work together to keep you comfortable, warm and dry in the outdoors, allowing you to adapt to the environments and weather conditions. Here is the classic layering system. The base layer is thermal underwear which sits next to your skin and wicks your sweat away. The mid layer is intended to provide insulation while still allowing moisture to escape. The outer layer works as a shield from the elements, water and wind. When developing all three layers, we make sure that each item performs at its best and provides the proper flexibility for your best ride.





# FINNTRAIL RIDING SYSTEM

1

## MOISTURE MANAGEMENT

- Wicks away moisture from the body
- Regulates body temperature



2

## INSULATION

- Retains body heat
- Keeps cold air away



3

## WEATHER PROTECTION

- Shields from environmental factors
- Both keeps water away and lets sweat evaporate



# BASE LAYER

## ALL SEASON 6205

### THERMAL UNDERWEAR

Hypoallergenic ALL SEASON underwear is perfect as a moisture-wicking base layer in hot weather or next-to-skin first thermal layer in the cold. Designed with minimal seams to ensure close fit and let the material perform its best at wicking away heat-robbing moisture so you stay dry all day long.

- Any temperature range
- Odor control fabric
- Hypoallergenic material
- May be worn all year round
- Designed for extreme tasks
- No crotch and side seams



**SIZE** S-M, L-XL, XXL-XXXL

## THERMO-S 6304

### THERMAL UNDERWEAR

THERMO-S thermal underwear is a base layer for cool-to-cold weather. Made of dense stretchy fabric with a soft brushed interior to trap heat and wick excess moisture away. Anatomical fit and flat seams prevent chafing and ensure greater comfort.

- Temperature range: -25°C to +10°C
- Anatomical fit
- Flat seams
- Elastic fabric with microfleece interior



**SIZE** XS-XXXL

**COLOR** Black, DarkGrey

# BASE LAYER

## SUBZERO 6404

### THERMAL UNDERWEAR

SUBZERO thermal underwear is perfect as a warm base layer or additional thermal layer in the cold weather. Made of dense material with WAFFLE-KNIT technology, it perfectly accumulates body heat and wicks away moisture. High zip collar and anatomical cut deliver a snug fit and good protection against cold air flow. Flat seams prevent chafing.

- Temperature range: -30°C to 0°C
- Hypoallergenic material
- WAFFLE-KNIT® fleece
- Flat seams
- High zipper collar

 0°C to -30°C



**SIZE** XS-XXXL

**COLOR** Black, DarkGrey

## SUBZERO-W 6405

### WOMEN'S THERMAL UNDERWEAR

The warmest base layer in our women's thermal underwear range. Made of dense material with WAFFLE-KNIT technology, it perfectly accumulates body heat and wicks away moisture. High zip collar and anatomical cut deliver a snug fit and good protection against cold air flow. Flat seams prevent chafing.

- Temperature range: -30°C to 0°C
- WAFFLE-KNIT® fleece
- Flat seams
- High zipper collar
- Tailored for women

 0°C to -30°C



**SIZE** XXS-L

**COLOR** Black

## MIDDLE LAYER



### NITRO 1320

#### SOFTSHELL JACKET

This windproof water-repellent jacket will cope with light rain and will not distract you from your favorite activity. Comfortable and suitable for everyday wear and as an insulating layer in the cold season.



- 3-layer SOFTSHELL material with an integrated membrane and microfleece next-to-skin layer
- Windbreak under the center zipper
- 3 zippered pockets: chest pocket and two side pockets with warm lining
- Sleeves and hood with elastic ribbing

**WATERPROOF** 7 000 mm  
**BREATHABLE FABRIC** 10 000g/m<sup>2</sup>/24h

**SIZE** XS - XXXL  
**COLOR** CamoArmy, Blue, Red

### NITRO 4603

#### SOFTSHELL PANTS

These pants are suitable for cool weather. Made of advanced 3-layer fabric with insulating microfleece, they provide excellent protection against wind and light rain. Match with the NITROjacket.



- 3-layer SOFTSHELL material with membrane and microfleece next-to-skin layer
- Elastic waistband belt
- Zip fly with button
- Ergonomic pants cut
- Two zipper side pockets
- Belt loops
- DWR finish

**WATERPROOF** 7 000 mm  
**BREATHABLE FABRIC** 10 000g/m<sup>2</sup>/24h

**SIZE** XS - XXXL  
**COLOR** DarkGrey

# MIDDLE LAYER



## MASTER 1503

### THERMAL JACKET

Lightweight Master jacket features smart DuPont Sorona® insulation, which offers the same insulation qualities as goose down. It can be used both as an extra insulating layer for ATV & UTV riding and a jacket for everyday wear. The moisture-resistant coating protects against light rain and wind. Recommended to wear with All Season, Thermo S, or Subzero thermal underwear.



- Lightweight and packable
- Moisture-resistant top layer
- Technological DuPont Sorona® insulation

**SIZE** S-XXXL  
**COLOR** CamoArmy, Graphite

## MASTER HOOD 1504

### THERMAL JACKET

This lightweight insulated hooded jacket is designed to be worn both as an insulating mid-layer or outerwear for ATV & UTV riding and a casual jacket for everyday wear. The jacket is evenly filled with advanced DuPont Sorona® insulation without adding bulk. The outer material repels water and securely protects against light rain and wind. Easily packable into your luggage.



- Lightweight and packable
- 200 g/m<sup>2</sup> DuPont Sorona® insulation
- Comfortable to wear hooded jacket

**SIZE** S-XXXL  
**COLOR** DarkBlue

# THERMAL SOCKS



## COOLMAX 3202

### SOCKS

Double-layer breathable socks for warm-season adventures. Coolmax layer wicks moisture away, while the outer layer resists wear and prevents chafing. Non-slip knitting and flat seams for comfort.



**SIZE** 39-42, 43-45

**COLOR** Lime

## COOLMAX W 3205

### WOMEN'S SOCKS

Breathable double-layer socks for women. Coolmax layer wicks moisture, outer layer resists wear and chafing. Non-slip knitting, flat seams for comfort.



- Wear-resistant
- Anatomical cut
- Non-slip knitting structure

**SIZE** 36 - 39

**COLOR** Pink

## MERINO 3201

### SOCKS

Double-layer thermal socks for snowmobile riding and outdoor winter activities. Perfect to head out to the wild in the cold season. Merino wool retains heat to keep your feet warm, while the outer layer provides wear resistance and prevents chafing. Non-slip knitting structure and flat seams ensure durable comfort.



- Australian merino wool
- Wear-resistant
- Anatomical cut
- Non-slip knitting structure

### COMPOSITION:

60% Merino wool, 20% Acrylic, 15% Nylon, 3% Elastane, 2% Spandex

**SIZE** 39-42, 43-45

**COLOR** Blue



## **LITTLE THINGS FOR BIG DEEDS**

We've developed a range of accessories, tailored to accommodate the needs of snowmobile riders during the winter season. Engineered with waterproof properties and built to withstand the harshest winter elements, these products will ensure the necessary comfort to conquer the snowy trails, untamed terrains, and any other challenge that dares to cross their path.

# GLOVES

## LOBSTER 2800

### GLOVES

New waterproof Lobster gloves are developed to keep your hands warm and comfortable in extremely cold weather conditions. The iconic split finger design provides the warmth of a mitten and dexterity of a common riding glove to easily operate shifters and brake levers. A HIPORA®

membrane fabric keeps out water, snow and wind, while THERMALRATE® insulation, extended cuffs and inner microfleece glove keep in warmth with minimal bulk. A palm and fingertips are reinforced with leather pads for excellent durability and confident grip.



- Palm and fingertips are reinforced with wear-resistant goat leather
- Waterproof HIPORA® membrane
- Anatomical cut
- Wrist and long cuff adjustment
- Elastic leash to fix the glove on the wrist
- Temperature range: as low as -30°C (-22°F)
- Soft microfleece lining

**WATERPROOF** 5 000 mm  
**BREATHABLE FABRIC** 5000g/m<sup>2</sup>/24h

**COLOR** GraphiteRed, GraphiteYellow  
**SIZE** M-XL

## WINTERSPORT 2750

### GLOVES

The waterproof insulated WINTERSPORT gloves introduce high-performance protection and durability for extreme tasks and aggressive riding in the cold. They feature an advanced HIPORA® membrane fabric, smart THERMALRATE® insulation, leather padding in the palm and reinforcement with extra heavy-duty polymer material in high stress areas. With anatomical cut and adjustable cuffs, the gloves offer

excellent fit. Silicone coated fingertips enhance grip and let you control shifters and brake levers confidently. Soft thumb pads work amazing to remove moisture from the face and goggles.



- THERMALRATE® insulation 50 g/m<sup>2</sup>
- Wear-resistant leather
- Reinforced with extra durable polymer material
- Reflective elements
- Waterproof HIPORA® membrane
- Elastic leash to fix the glove on the wrist
- Extended size range
- Soft thumb pad to remove moisture from the face
- Soft microfleece lining
- Anatomical cut

**WATERPROOF** 10 000 mm  
**BREATHABLE FABRIC** 7000g/m<sup>2</sup>/24h

**COLOR** GraphiteRed, GraphiteYellow, GraphiteGrey, GraphitePink  
**SIZE** S-XXL



# GLOVES



## IMPACT 2710

### GLOVES

The waterproof insulated gloves are designed for high-intensity riding at temperatures as low as to  $-15^{\circ}\text{C}$  in conditions of high humidity. They introduce an excellent blend of high-performance HIPORA® membrane fabric, THERMALRATE®

insulation, and leather reinforcement in the palm to enhance wear resistance. Adjustable cuffs provide a tight and secure fit. Soft thumb pads work amazing to remove moisture from the face and goggles.



- THERMALRATE® insulation  $50 \text{ g/m}^2$
- Palm and fingertips are reinforced with heavy-duty genuine leather
- Waterproof HIPORA® membrane
- Adjustable cuffs
- Soft microfleece lining
- Soft thumb pad to remove moisture from the face
- Anatomical cut

**WATERPROOF** 10 000 mm  
**BREATHABLE FABRIC**  $7000 \text{ g/m}^2/24\text{h}$

**COLOR** GraphiteRed, GraphiteYellow

**SIZE** M-XL

# ACCESSORIES

## TURBOBALA 9723

### LINER

Liner with a special anatomical design made of thin, elastic material. The lower part of the mask can be easily pulled under the chin. The upper part remains on the head.



## THERMOBALA 9722

### LINER

Balaclava made of thin warm material on top and a dense windproof material on the bottom. Ideal for riding an ATV or snowmobile in the cold season.



- Flat seams
- Retroreflective logos

**SIZE** ONE SIZE

- Anatomically designed
- Retroreflective logos provided

**SIZE** ONE SIZE

## DAILY HAT 9717

### HAT / HEADWEAR

A new jacquard knit hat for outdoor activities. Lightweight and durable, it ensures a comfortable tight fit.



**COLOR** Red, Yellow  
**SIZE** M-L, XL-XXL

# ACCESSORIES

## TUBE PRO 9802

### WINTER NECKWEAR

Multifunctional neckwear with fleece lining for outdoor activities and everyday wear in winter. Warm and lightweight, it is designed to protect your neck and face in cold weather conditions. Flat seams ensure more comfort.

- Stretchy UV-resistant fabric
- Soft fleece lining
- Flat seams
- Reversible
- Brand print



**COLOR** CamoArmy, CamoShadowBlack, Blue, Pink

**SIZE** ONE SIZE

## TUBE 9800

### SCARF

Multifunctional scarf for any weather. Thin, stretchy material nicely fits to the neck.

- Stretchy material
- Brand print
- UV-resistant fabric



## TUBE 9801

### SCARF

Multifunctional scarf for any weather. Thin, stretchy material nicely fits to the neck.



- Stretchy material
- Brand print
- UV-resistant fabric

**COLOR** Black

**SIZE** ONE SIZE

**COLOR** CamoArmy, LightGrey

**SIZE** ONE SIZE

## WIDE BELT 8101

### BELT

Wide elastic belt with a Fastex buckle for winter overalls and waders. Silicone coating ensures anti-slip properties and proper performance. Adjustable length.



- Elastic belt
- Anti-slip silicone coating
- Reliable Fastex buckle

**SIZE** 75-100,100-125

**LIFESTYLE**



## **FINNTRAIL FOR EVERY DAY**

Introducing our brand new line-up of FINNTRAIL casual wear, which is just as comfortable for outdoor activities as it is for everyday use. Developed with our original and recognizable design, this collection features unisex t-shirts, hoodies, and trousers, now available this year.

For those who love comfort and style, FINNTRAIL casual wear is the perfect choice. With our high-quality materials and eye-catching design, you'll feel great wherever you go.

# LIFESTYLE

## HOODIE

This classic hoodie brings a sense of comfort and ease into life. Made of 320 gsm brushed fleece, it features a regular fit, adjustable hood, kangaroo pocket, elastic cuffs and ribbed hem. Branded with the Finntrail logo on the front.

- Regular fit for men and women
- 320 gsm brushed fleece
- Adjustable hood with lining
- Large kangaroo pocket
- Elastic cuffs and ribbed hem
- Bold branding



**HOODIE 6807**



**HOODIE 6808**

SIZE XXS - XXXL

## HOODIE 6803

This classic hoodie brings a sense of comfort and ease into life. Made of 320 gsm brushed fleece, it features a regular fit, adjustable hood, kangaroo pocket, elastic cuffs and ribbed hem. Branded with the Finntrail logo on the front.

- Regular fit for men and women
- 320 gsm brushed fleece
- Adjustable hood with lining
- Large kangaroo pocket
- Elastic cuffs and ribbed hem
- Bold branding



SIZE XS - XXXL

## T-SHIRT

Classic O-neck T-shirt made of cotton elastane blend to ensure increased wear resistance. Branded with the Finntrail logo on the front.

- Classic, straight silhouette
- Soft cotton elastane blend
- O-neck
- Bold branding



**T-SHIRT 6707**



**T-SHIRT 6708**

**SIZE** XXS - XXXL

## T-SHIRT 6703

Classic O-neck T-shirt made of cotton elastane blend to ensure increased wear resistance. Branded with the Finntrail logo on the front.

- Classic, straight silhouette
- Soft cotton elastane blend
- O-neck
- Bold branding



**SIZE** XS - XXXL



## PANTS LOGO 1401

Sport pants with regular fit are designed for maximum casual comfort and easy feel. Made of soft brushed fleece. The pants feature two side pockets, elastic waistband, and ribbed leg cuffs.

- Regular fit for men and women
- 320 gsm brushed fleece
- Two side pockets
- Elastic waistband
- Ribbed leg cuffs
- Bold branding



**SIZE** XXS - XXXL

**COLOR** Black, BlackYellow, Khaki

# TECHNOLOGIES



## HARD-TEX® MEMBRANE

Hard-Tex® membrane is a waterproof breathable membrane fabric. This microporous material has over 1.2-1.4 billion tiny holes per square centimeter. These pores are smaller than raindrops and larger than vapor molecules. Due to this structure, Hard-Tex® membrane stops liquid water but allows vapor to pass through. This means Hard-Tex® keeps you dry from the water outside and lets excess moisture evaporate from the skin.



## 3M™ REFLECTIVE ELEMENTS

Durable reflective elements are made by 3M™ Company from a material which reflects a large amount of light directly back toward its source. All garments with 3M™ reflective elements provide enhanced visibility of the rider, improving his safety, especially at nighttime, dawn, and dusk.



## POLARTEC® FABRIC

Polartec Thermal Pro fleece is the most advanced performance material of the Polartec® insulation fabrics. Its unique surface structure creates air pockets to trap air and retain body heat, delivering excellent lightweight warmth. Since Thermal Pro is also breathable, fast-drying, and durable, it's perfect for dynamic or static outdoor activities in mild and cold weather.



## THINSULATE™ INSULATION

Thinsulate™ is an innovative synthetic material which is created to be more effective than natural down due to the increased density of fibers with a decreased size of fibers. The gaps between fibers not only retain some of the heat produced by the body, but also allow moisture to escape. Thinsulate™ retains its insulating properties when wet and performs great in any environment.



## THERMALRATE® INSULATION

An innovative Thermalrate® insulation technology introduces the best warmth-to-weight ratio. Thermalrate® is a go-to choice for a thin and effective insulation layer in high-performance gear. It offers great insulation properties in a smaller package and low water absorption to perform great in wet conditions.



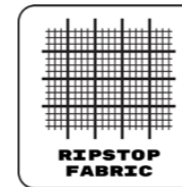
## CORDURA® REINFORCEMENT

Cordura® is a heavy-duty material that has been developed to reinforce other fabrics for greater abrasion and tear resistance. When reinforced with Cordura® in key stress areas, riding gear becomes more durable and helps riders avoid cuts or gravel rash in the toughest environments.



## HIPORA® MEMBRANE

Hipora® is a 3-layer membrane fabric with a polyurethane coating that prevents water from entering but lets moisture out. It has a microporous structure with tiny holes in it, so water droplets won't get inside the gear, but excess vapor can expel. Your body does not get sweaty while you stay dry and warm.



## RIPSTOP FABRIC

Ripstop is a thin, lightweight and waterproof fabric that resists tearing and ripping due to a special reinforcing technique. During the weaving process, thicker threads are interwoven in a crosshatch pattern. With this structure, small tears can not easily spread across the fabric. It makes the finished gear more durable with the excellent strength-to-weight ratio.



## DWR

DWR is an ultra-thin Durable Water Repellent finish that is applied to the outer layer of a membrane fabric. It lowers the surface tension of the material and makes water disperse rather than saturate. DWR is usually used with waterproof membrane multi-layer fabrics such as Hard-Tex® to additionally protect outer layers against water penetration.



## YKK FASTENING

YKK fastening products set the industry standards for function, quality, and design. The extra strong YKK plastic hardware provides a smooth and easy release in high-performance riding gear. In Fintrail waders, suspenders come with opposing YKK buckles for waist-high conversion and easy put on/off performance.



## F.I.L.L.®

F.I.L.L.® technology is used in riding gear to ensure additional flotation assistance in emergency cases. This is a special highly buoyant mid-layer applied in the basic fabric. If a rider breaks through the ice and falls into the water, F.I.L.L.® technology helps them to stay on the surface, keeping the head above the water for a certain period of time. NOTE! This is not a survival vest or other flotation devices.



